

**ANP32E Antibody (N-term)**  
**Purified Rabbit Polyclonal Antibody (Pab)**  
**Catalog # AP20559a****Specification**

---

**ANP32E Antibody (N-term) - Product Information**

Application	IF, WB,E
Primary Accession	<a href="#">Q9BTT0</a>
Other Accession	<a href="#">Q5XIE0</a> , <a href="#">P97822</a>
Reactivity	Human, Mouse
Predicted	Rat
Host	Rabbit
Clonality	Polyclonal
Isotype	Rabbit IgG
Calculated MW	30692
Antigen Region	21-44

**ANP32E Antibody (N-term) - Additional Information****Gene ID** 81611**Other Names**

Acidic leucine-rich nuclear phosphoprotein 32 family member E, LANP-like protein, LANP-L, ANP32E

**Target/Specificity**

This ANP32E antibody is generated from a rabbit immunized with a KLH conjugated synthetic peptide between 21-44 amino acids from the N-terminal region of human ANP32E.

**Dilution**

IF~~1:25

WB~~1:1000

E~~Use at an assay dependent concentration.

**Format**

Purified polyclonal antibody supplied in PBS with 0.09% (W/V) sodium azide. This antibody is purified through a protein A column, followed by peptide affinity purification.

**Storage**

Maintain refrigerated at 2-8°C for up to 2 weeks. For long term storage store at -20°C in small aliquots to prevent freeze-thaw cycles.

**Precautions**

ANP32E Antibody (N-term) is for research use only and not for use in diagnostic or therapeutic procedures.

**ANP32E Antibody (N-term) - Protein Information****Name** ANP32E

**Function** Histone chaperone that specifically mediates the genome-wide removal of histone H2A.Z/H2AZ1 from the nucleosome: removes H2A.Z/H2AZ1 from its normal sites of deposition, especially from enhancer and insulator regions. Not involved in deposition of H2A.Z/H2AZ1 in the nucleosome. May stabilize the evicted H2A.Z/H2AZ1-H2B dimer, thus shifting the equilibrium towards dissociation and the off-chromatin state (PubMed:[24463511](#)). Inhibits activity of protein phosphatase 2A (PP2A). Does not inhibit protein phosphatase 1. May play a role in cerebellar development and synaptogenesis.

**Cellular Location**

Cytoplasm. Nucleus.

**Tissue Location**

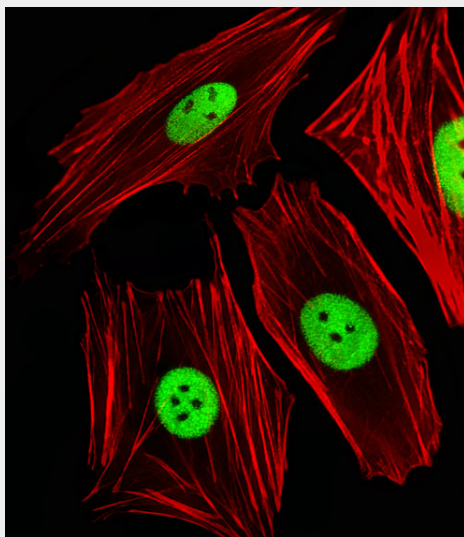
Expressed in peripheral blood leukocytes, colon, small intestine, prostate, thymus, spleen, skeletal muscle, liver and kidney.

**ANP32E Antibody (N-term) - Protocols**

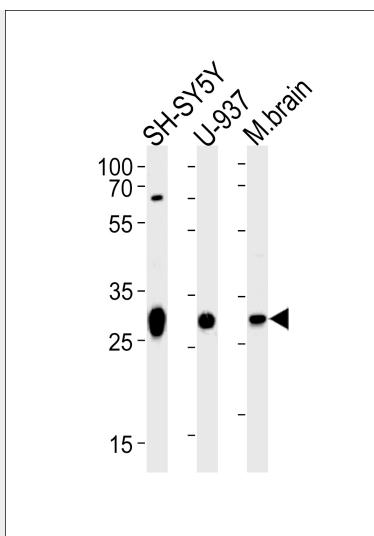
Provided below are standard protocols that you may find useful for product applications.

- [Western Blot](#)
- [Blocking Peptides](#)
- [Dot Blot](#)
- [Immunohistochemistry](#)
- [Immunofluorescence](#)
- [Immunoprecipitation](#)
- [Flow Cytometry](#)
- [Cell Culture](#)

**ANP32E Antibody (N-term) - Images**



Fluorescent image of SH-SY5Y cells stained with ANP32E Antibody (N-term)(Cat#AP20559a). AP20559a was diluted at 1:25 dilution. An Alexa Fluor 488-conjugated goat anti-rabbit IgG at 1:400 dilution was used as the secondary antibody (green). Cytoplasmic actin was counterstained with Alexa Fluor® 555 conjugated with Phalloidin (red).



Western blot analysis of lysates from SH-SY5Y, U-937 cell line and mouse brain tissue lysate (from left to right), using ANP32E Antibody (N-term) (Cat. #AP20559a). AP20559a was diluted at 1:1000 at each lane. A goat anti-rabbit IgG H&L(HRP) at 1:5000 dilution was used as the secondary antibody. Lysate at 35ug per lane.

#### **ANP32E Antibody (N-term) - Background**

Inhibits activity of protein phosphatase 2A (PP2A). Does not inhibit protein phosphatase 1. May play a role in cerebellar development and synaptogenesis process by modulating PP2A activity (By similarity).

#### **ANP32E Antibody (N-term) - References**

Jiang M.,et al.Cytogenet. Genome Res. 97:68-71(2002).  
Ota T.,et al.Nat. Genet. 36:40-45(2004).  
Bechtel S.,et al.BMC Genomics 8:399-399(2007).  
Gregory S.G.,et al.Nature 441:315-321(2006).  
Mural R.J.,et al.Submitted (SEP-2005) to the EMBL/GenBank/DDBJ databases.